

FISCAL YEAR 2023 AT A GLANCE

Woman's is the only free-standing hospital remaining in this country dedicated to the specialized needs of women.

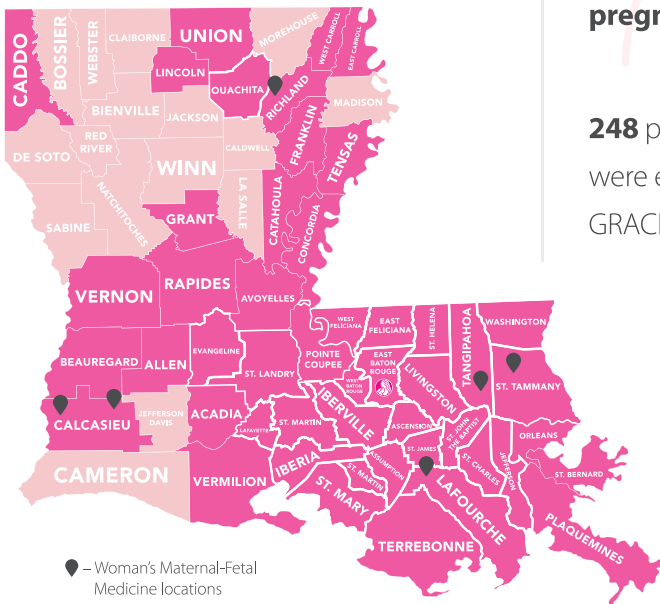


Woman's served patients from **56 of the 64 Louisiana parishes.**

Pregnancy & Childbirth

Woman's is the largest delivery service in Louisiana.

7,924 deliveries from 48 parishes across the state.



Woman's Maternal-Fetal Medicine has **6 satellite locations** across the state and had **14,593 high-risk pregnancy visits.**

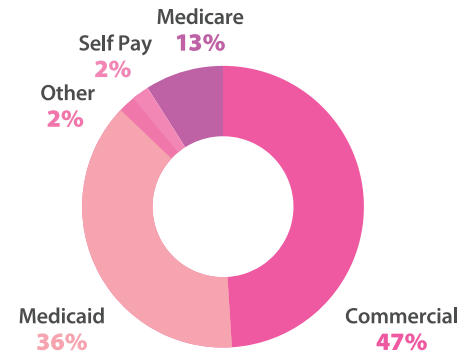
248 pregnant women were enrolled in the GRACE program.

Newborn & Infant Intensive Care (NICU)






Woman's has the **largest NICU in the state.**

As a Level IIIS NICU, we cared for patients from **37 parishes** and completed **140 neonatal transports.**

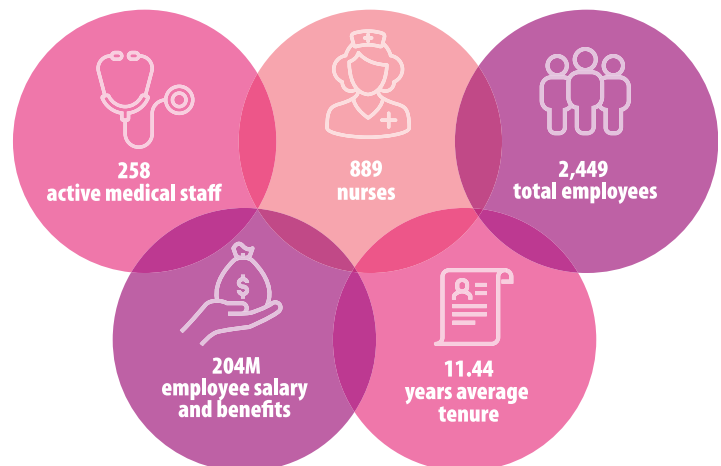
Patient Payor Mix



Patient Care

-  102,791 lives touched
-  11,219 adult hospital admissions
-  1,160 NICU hospital admissions
-  13,832 new cancer pavillion treatments
-  9,670 surgeries

Employees & Medical Staff



All numbers reflect 2023 data.